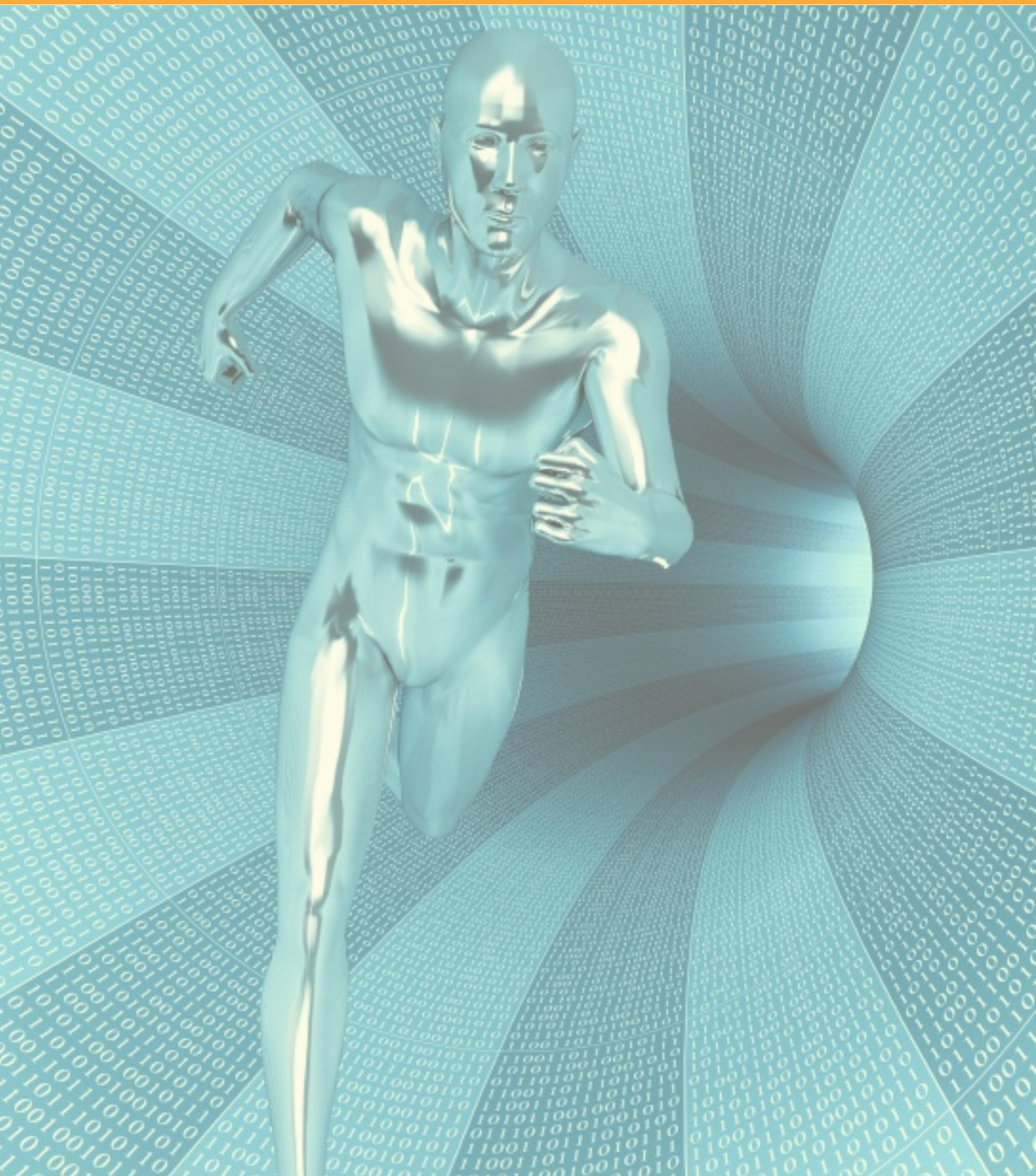


STAHL ENDOSCOPY

ENT



NASO-PHARYNGOSCOPES

AUTOCLAVE

18 min / 134° C / 273° F

DESCRIPTION

CAT



Flexible Naso-Pharyngoscope
with ETO valve

5032.300

Naso-Pharyngoscope 3.2 mm

- Conventional image bundle, **7,000** pixels
- 2 way deflection
- One hand operation
- Includes: transport case, leakage tester, light guide 05.0086L

Working length:	300 mm
Working-Ø:	3.2 mm
Deflection:	up 140°, down 140°
Length of movable tip section:	20 mm
Viewing direction:	0°
Field of view	70°
Depth of field:	6 mm - 1,000 mm



Flexible Naso-Pharyngoscope
with ETO valve

5032.300/16k

Naso-Pharyngoscope 3.2 mm

- Conventional image bundle, **16,000** pixels
- 2 way deflection
- One hand operation
- Includes: transport case, leakage tester, light guide 05.0086L

Working length:	300 mm
Working-Ø:	3.2 mm
Deflection:	up 140°, down 140°
Length of movable tip section:	20 mm
Viewing direction:	0°
Field of view	80°
Depth of field:	6 mm - 1,000 mm

NASO-PHARYNGOSCOPES

AUTOCLAVE

18 min / 134° C / 273° F

DESCRIPTION

CAT

Flexible Naso-Pharyngoscope
with ETO valve

5038.300

Naso-Pharyngoscope 3.8 mm

- Conventional image bundle, **12,000** pixels
- 2 way deflection
- One hand operation
- Includes: transport case, leakage tester, light guide 05.0086L

Working length:	300 mm
Working-Ø:	3.8 mm
Deflection:	up 120°, down 120°
Length of movable tip section:	25 mm
Viewing direction:	0°
Field of view	80°
Depth of field:	6 mm - 1,000 mm



TELE-LARYNGO-PHARYNGOSCOPE

DESCRIPTION

CAT

Tele-Laryngo-Pharyngoscope

51090-153

FlexiLux II Tele-Laryngo-Pharyngoscope

- Sharp image, significant depth of field
- High performance illumination
- 2 different magnifications:
Panoramic view and examination of details
- Soakable and gas sterilizable

Working length:	153 mm, rigid
Working-Ø:	10.00 mm
Direction of view:	90°
Working distance:	15 mm to infinity
Magnification:	1 : 1.6



VIDEO NASO-PHARYNGOSCOPE WITH CHIP-IN-TIP TECHNOLOGY



- Clear, full format monitor image through Chip-in-Tip video technology (CMOS)
- Bright and homogenous illumination by means of an integrated LED illumination engine
- Excellent 135° distal deflection brings hard to reach areas into view
- Thin and extremely flexible 3.8 mm diameter insertion tube optimized for more patient comfort
- Increased physician comfort due to ergonomic handpiece design
- Simple start-up, no camera adjustments or white-balance necessary due to factory video settings and LED illumination
- Absolutely silent controller
- Low cost of ownership since the all-in-one approach replaces fiber naso-pharyngoscope, camera and light source

This video naso-pharyngoscope impresses with its ease of use and high level of innovation. The improved ergonomic handpiece with easy to reach deflection lever and function buttons offers user friendly operation. Excellent engineering and the use of high quality materials lead to a long reprocessing lifetime.



TECHNICAL DATA

DESCRIPTION

ITEM NUMBER

Video Naso-Pharyngoscope Set
 Consisting of: Video Naso-Pharyngoscope, EC150 camera controller,
 software CD (demo version), leakage tester, transport case

31.0010s.cam

VIDEO NASO-PHARYNGOSCOPE

OPTICAL SYSTEM

Image sensor	CMOS
Image resolution	QVGA
Field of view	85°
Direction of view	0°
Depth of field	6 – 60mm

INSERTION TUBE

Distal end outer diameter	3.8mm
Working length	300mm
Integrated LED illumination	Yes

BENDING SECTION

Angulation range	up 135° / down 135°
------------------	---------------------

EC150 CAMERA CONTROLLER

SPECIFICATIONS

Front panel controls	LED intensity control / On-Off
Outputs	2 x Video (CVBS), 1 x USB

Monitor (recommended: 15"), external recording device or PC software, disinfection wipes are available upon request.
 Please contact us for further information.

DETAILS



DISTAL TIP



DEFLECTION LEVER



FUNCTION BUTTONS

STAHL

E N D O S C O P Y

DISTRIBUTED BY:



3061 NW 82nd AVENUE
MIAMI, FL 33122
USA

Phone: 305-406-2222
Fax: 305-406-2113
E-mail: shmedical@shmedical.com
www.shmedical.com